



TradeLink Technologies



# TradeLink Technologies

SHIPMENT VISIBILITY

SHIPMENT ACCURACY

ADVANCED DISTRIBUTION

SCAN AND PACK

SERIALIZATION

PACKING AND LABELLING

DECISION SUPPORT

ORDER MANAGEMENT

RAW MATERIAL TRACKING

PRODUCTION MONITORING

WIP MILESTONES

TRADE FINANCE

VENDOR MANAGEMENT LOGISTICS

## CONTACT US

Hong Kong (Headquarters)

Address: Units 2005-2007, 20/F, Two Harbourfront,

22 Tak Fung Street, Hunghom, Kowloon, Hong Kong

Tel No.: (+852) 37199000

Support: [support@tradelinkone.com](mailto:support@tradelinkone.com)

Sales: [salesGCR@tradelinkone.com](mailto:salesGCR@tradelinkone.com)

United States (Headquarters)

Address: 1119 S. Kings Drive, Charlotte, NC 28207

Tel No.: (+1) 704 609 0188 (Main), (+1) 203 647 2117 (Support)

Support: [supportUSA@tradelinkone.com](mailto:supportUSA@tradelinkone.com)

Sales: [salesUSA@tradelinkone.com](mailto:salesUSA@tradelinkone.com)

## FOLLOW US



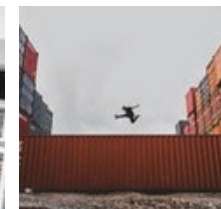
WeChat



Facebook



LinkedIn





## TradeLink Technologies



### Customizable:

- Supports all SSCC labeling and messaging workflows.
- All major labeling standards such as GS1 etc.
- Increase shipment accuracy with automated scanning workflows – scan & pack, pack & scan, and scan & load
- Facilitate Origin Direct / DC Bypass Shipments
- Includes parcel package labeling

### Scalable:

- Cloud-based and / or light-weight applications options
- Easy to install
- Achieve to 100% shipment visibility with right-sized solutions for any supplier
- Many Buyer level customers have utilized whole suite of solution packages
- Suppliers can leverage TradeLink solutions for multiple brand or retailer partners.

Inclusive: We can integrate your workflow with:

- Buyers
- Suppliers
- Buying agents
- Forwarders
- Consolidators
- Trade Finance
- Customs Brokers
- Any Hardware manufacturer



## TradeLink Technologies

TradeLink Technologies (TradeLink) was founded in 1999 with the mission to create forward-thinking supply chain solutions for global brands and retail companies. We provide shipment visibility, shipment accuracy, and advanced distribution solutions to over 500 global brands, and more than 50 logistics companies with a network of over 12000 suppliers, across 70 countries.



### Importer Benefits

- ① **Shipment visibility:** Solutions that provide 100% shipment visibility from the exporter including item, carton, factory and shipping
- ② **Shipment accuracy:** Via the latest in barcoding technologies and scanning workflow.
- ③ **Decision support:** Buyers and factories can run online reports or customize with our Report Builder.
- ④ **Advanced supply chain workflow:** Use our solutions for direct shipment, DC Bypass, VMI, Parcel Package, etc.
- ⑤ **Fully utilize IT and operation resources:** Leverage qualified third-party IT operating resources to optimize workflow.

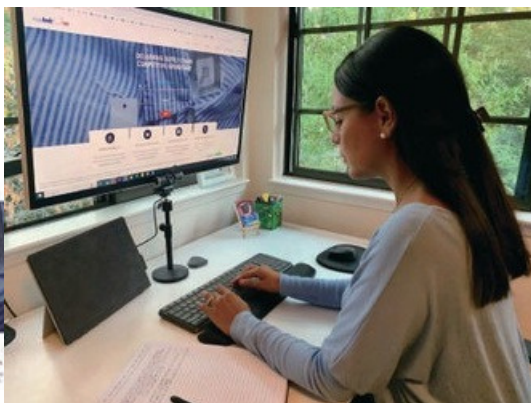
### Supplier Benefits

- ① **Low investment cost:** We provide solutions that are affordable and available to use for multiple buyers.
- ② **Efficient data interchange:** Automated information integration and less paperwork, Internet-based, no complicated EDI.
- ③ **RFID:** Verify shipment accuracy with RFID Scanning.
- ④ **WIP capability:** Automate raw material inventory ordering process or manufacturing tracking process. WIP Status reporting for exporters.
- ⑤ **Trade Finance:** TradeLink can provide commercial invoices and verify other business documents.



## TradeLinkOne Portal

TradeLinkOne is a web-based application that is customized to customer specifications. It contains shipment information from the Buyer's purchase order, the Supplier's packing list, and invoice and shipment status. Behind the scenes TradeLinkOne allows all supply chain trading partners to create, send, receive, negotiate, acknowledge, and display electronic business documents and shipment information securely. It can link all of the parties in the supply chain including Buyers, Logistics Service Providers, Suppliers, and Financial Parties globally.



### TradeLinkOne's Features:

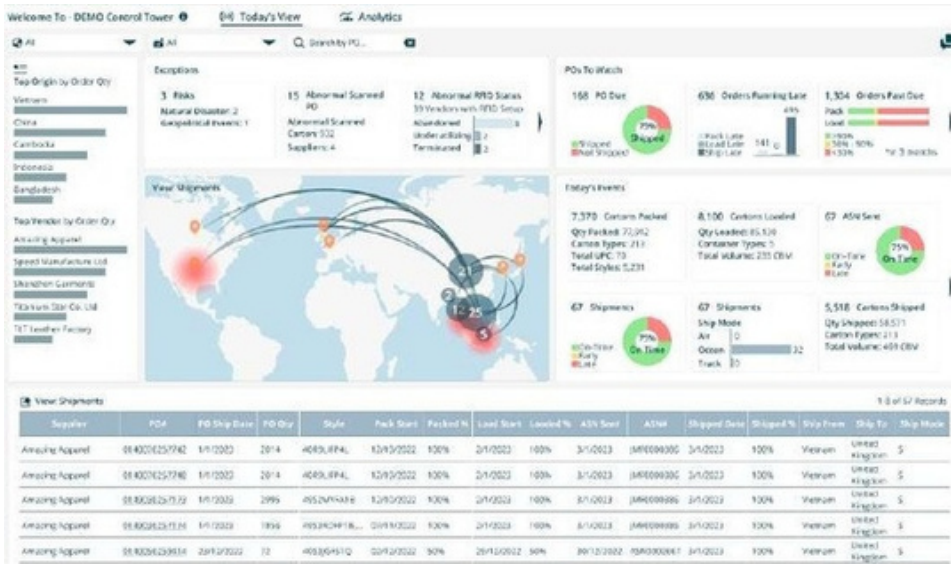
- Customized to Buyer's requirements and includes Routing Methodology
- Exchange business documents through the Internet or Value Added Networks (VAN) with security tools
- System flow follows the physical flow of shipping information
- Accessible by all qualified parties
- Document display in different formats (HTML, PDF) which can be printed and served a legal copy
- PO Management include PO collaboration.



### Benefits:

- Cloud-based management reporting tools
- Metrics and analytics enabled
- Coupled with email alerts
- Real-time display of shipment document details
- Secure-employs SSL, digital certificates, encryption, AS2 communication protocols, and Web API
- Paperless, providing cost and time savings
- Complete online visibility
- Supports multiple buyers and document standards





# TowerOne

Having an effective supply chain is essential for any business seeking to maximize efficiency and profitability. A supply chain control tower is a powerful tool that helps businesses manage and improve supply chain efficiency. With the aim to deliver a supply chain competitive advantage, Tradelink is introducing the Tradelink TowerOne – an innovative technology that helps buyers achieve faster, more efficient, and more reliable supply chain operations.

In the middle of the TowerOne, buyers can see a map with all shipments being shipped from factories today. Together with the exception panel on the top that notices the potential hazards, buyers can quickly assess the performance of their shipments. Highlights of purchase orders are put on the right, for buyers to have a summarized view of the progress of the PO that needs attention.

# TowerONE



### TowerOne's Features :

- Allows buyers to monitor the supply chain, maintain compliance with production and shipment.
- Take corrective actions in a timely manner.
- Providing enhanced visibility and real-time data.
- Buyers can also search for a PO and immediately see its shipment status presented on the map with a vertical timeline.
- Provide visibility of the overall production and shipment progress of the PO for a more comprehensive assessment of the PO.
- Buyers can make data-driven decisions and optimize their operations.
- Tradelink TowerOne maximizes supply chain performance by identifying anomalies and predicting potential disruption.



### Benefits:

- Better visibility and faster response.
- Enables buyers to better manage their operations, leading to improved decision-making.
- Help buyers create a more efficient and profitable supply chain.
- Can quickly identify the areas in the supply chain that need attention and troubleshoot potential supply chain issues.





## PackONE

PackOne is a lightweight application optimized to support advanced factory packing operations, from scanning, labels, trade documents, RFID, and more. PackOne receives a Buyer Purchase Order over the internet in an XML standard from a Cloud-Based portal called TradeLinkOne and makes it available to the Supplier to create shipment documents and statuses. The supplier receives the purchase order then performs a packing operation (scan & pack, pack & scan, or label pre-generation) to create GS1-128 carton labels in the required Buyer format and any shipment documents required such as packing lists, invoices, statuses, etc. Along with this shipment documentations, the application produces electronic versions of the Advance Ship Notice (ASN) or packing lists, invoices, or status es. The packing list file or ASN is then sent via the internet to the TradeLinkOne website and translated back to the buyer or other designated supply chain trading partners..



PackOne system can handle any EDI-specific 850 Purchase Order and 856 Advance Shipment Notice (ASN) for all buyers. PackOne has versions that can be scaled from 1 user to hundreds, the data can also reside in the cloud.

# PackOne



### PackOne's Features:

- Scalable from single user to any number of users version
- Generates labels in a "scan & pack"/ "scan & verify"/ "label generation without scanning"/ "pick & pack" mode
- Creates all required shipping documents required by the Buyer customer including GS1-128 carton labels
- Supports multi-Buyers' requirements with the same system in the same location
- Defaults many data elements or automatically creates it saving clerical time
- Stores different document formats for the same buyer or different buyers
- Audits container loads via a carton label scan process
- Uploads packing and loading status to TradeLinkOne for online monitoring
- Supports drop/direct shipments
- Pre-generates carton labels in batch or single mode
- Allows the system to define carton types and dimensions
- Provides more packing controls with audio, visual features, and alerts
- Supports hang tag and poly-bag sticker printing
- Offered in 9 different local language versions
- RFID enabled
- Supports SOLAS requirements
- Integrated scale and modified with standard weight

### RFID

Low-cost, simple RFID technology is now available to scan a carton in seconds, reducing labor packing costs by over 50% and mistakes to zero. The same RFID technology used in packing and shipping can now be leveraged in other areas such as production, finishing, and QC for more benefits.

With RFID, application supports the customer's internal or external serialization partner for project serialization.





## mLinkOne

mLinkOne was developed to capture specific shipment information from primarily seasonal / low volume suppliers or to provide buyers with rapid deployment options. It provides the final piece of the solution set to comply with buyer required GS1-128 carton labels and electronic Advance Ship Notices (ASN) and invoices.



### mLinkOne's features:

- mLinkOne is certified by the buyer and supports all of the buyer's requirements for vendor data compliance
- Online application for PO acceptance, label ordering or printing, and ASN generation
- Regional offices can be paired with Label Services to deliver printed labels to suppliers without printers
- All purchase orders and shipment details can be checked via a secure customized web-based portal
- All trade documents can be printed from the portal



### Benefits:

- No investment in hardware or software is required. Pay only as you use.
- Helps Buyers achieve 100% shipment visibility and 100% automated receipt.
- Email alerts, reporting, and dashboard provide up-to-date information on all POs and shipments.

# mLinkONE

mLinkOne allows consolidators to receive and send shipment level information or status with the use of an internet-secured account. No other technology is needed. The system uses Web API or proprietary standards to exchange shipment data. Our cargo transportation customers are now able to offer their customers direct shipment processing.

## Label Service

TradeLink Technologies Ltd provides online ordering and printing services for Price Tickets and GS1 labels. Factories check PO and order Price Tickets online through a simple and secure web platform.



### Features:

- Purchase Orders are received in the TradeLinkOne account from the buyers and factories can log in to view and order tags via the same portal interface
- Order details like Product ID, Product Description, Color, size are automatically extracted from the buyer's electronic PO
- Prints images can be previewed and saved as PDF files
- Factories simply need to press a few buttons to confirm the order quantity



### Benefits:

- Eliminates costly human errors in data entry
- Saves order handling time
- Increases data accuracy
- Reduces potential chargeback


# Label Service

By TradeLink Technologies Ltd



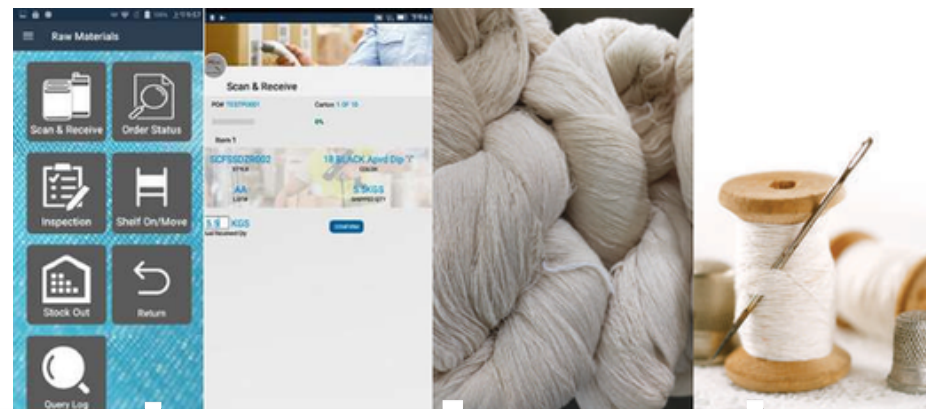
# InventoryOneM

InventoryOneM is a cloud-based solution to help customers manage and visualize their Raw Materials Inventory status among multiple warehouses in different locations. The solution consists of three components: TradeLinkOne platform, mLinkOne application, and InventoryOneM mobile APP



**Problems factories encounter**

It is difficult to accurately control the inventory of raw materials and requires human resources for stocktake. The labor cost might be increased and not be able to meet buyers' requirements



**mLinkOne**                      **TradeLinkOne**                      **InventoryOneM (APP)**

### InventoryOneM provides effective management of Raw Materials Suppliers

TradeLinkOne receives Raw Materials PO information from customers' ERP system and loads it into different Raw Materials suppliers' portal account. The suppliers can log in to view POs, and enter packing information in the mLinkOne application to create QR code labels for shipment. Shipping documents can be prepared and submitted via mLinkOne

### InventoryOneM provides better control for Raw Materials Inventory

When the raw materials arrive at the factories, the users can scan the QR Codes via the WIP361 mobile APP on an Android device. The scanned information will be synchronized back to TradeLinkOne portal to let the client have visibility of the status of their raw materials orders

### InventoryOneM provides Forecasted Inventory Function

Inventory will be projected according to the current inventory, ASN(s) sent by RM vendors. Will contain the expected fabric components (styles) available at any given factory, as well as the total components expected to be available at all factories.



### Benefits:

- Low-cost first-time investment and quick to deploy with local support.
- All traceability data of raw materials can be tracked after the products are produced
- Increase the transparency and visibility of the supply chain
- The entire document set is stored in the cloud platform and can easily be accessed by different parties
- Allow external partners such as buyers, suppliers and agents to collect and integrate data to build up a more open platform
- Raw materials delivery and receiving statuses are updated on a real-time basis by scanning QR codes from different parties. Logistics providers can also get involved to provide a more detailed track and trace status
- QA inspection reports are immediately available after performing the inspection check at the finished goods factories
- Raw Materials commercial invoices can be automatically generated and safe-guarded by the 3-way matching mechanism built-in TradeLinkOne to ensure the accuracy of the invoice data
- InventoryOneM can easily be integrated with the internal systems of Raw Materials suppliers and Finished Goods factories to fully utilize all digital information to minimize human input and mistakes



A cloud-based web portal connecting to your ERP systems for data integration and conversion. It has built-in PO Collaboration features and provides visibility for you to review all the inbound and outbound business documents for raw materials as well as the Inventory status.

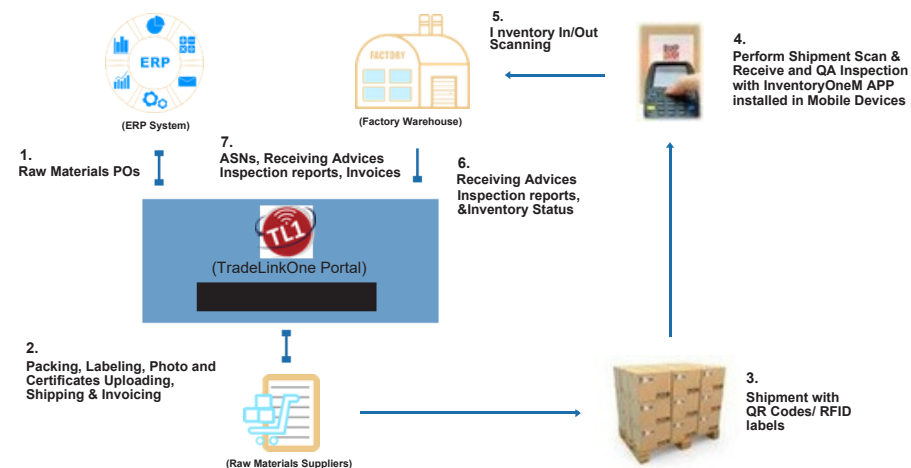
An online application built inside the TradeLinkOne platform. It allows the raw materials suppliers to view their purchase orders, create and print QR Code / RFID labels for their shipment, upload photos, create commercial invoices, and submit shipping documents after ex-factory.

An Android-based mobile Application for the factory to scan and receive the raw materials into the factories, perform inspection, scan the materials on / off the shelf, and perform regular stock take.

### InventoryOneM Mobile APP

- ① Finished Goods Factory Scan & Receive Raw Materials by InventoryOneM Android APP include PO number, carton number, weights, and more
- ② Inspection Module on InventoryOneM APP (reports can be view via mobile device)
- ③ Track Packing, Shipping, Receiving Status on InventoryOneM APP
- ④ Inventory Management Module supports RFID or barcode scanning, provide visibility on inventory status including inventory in/out, stock take, transfer

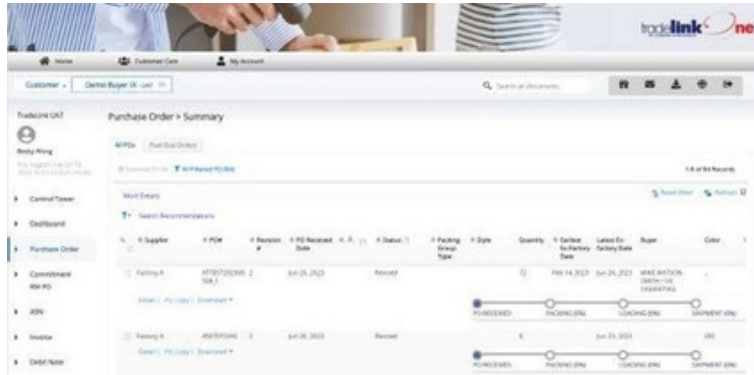
### Solution Overview



# WIP Portal

## WIP Portal integration Customers and Vendor Portal System

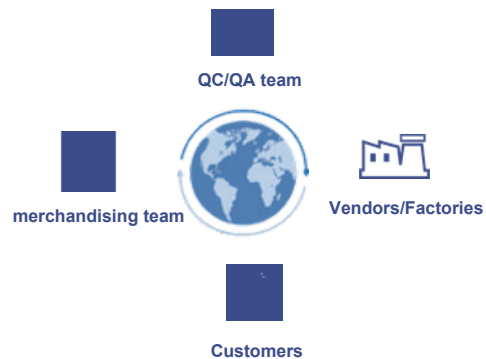
WIP Portal a cloud-based, Work-in-Progress (WIP) platform to facilitate supply chain integration. Enable the direct communication update on production status. Provide a smart tracking system for merchandisers to monitor manufacturing and inventory progress. Realise EDI data integrity and synchronization between Vendor Logistics Portal and WIP Portal.



### Objectives and Benefits:

- Promote production status transparency for optimal process management
- Facilitate collaborative work between merchandisers and factories
- Customize for WIP milestones and checkpoints for different brands
- Create functional WIP reports for process refinement and performance evaluation
- Eliminate communication barriers and facilitate collaborative work
- Enhance supply chain efficiency and transparency for the supply chain network

### System major stakeholders



### System features:

- Cloud-based WIP monitoring with e-Supply Chain integration
- Configuration of milestones and checkpoints under respective production demands
- Customization for WIP templates under multiple customer/ brand/ departments
- WIP data synchronization with sales order lines under a consolidated ERP system
- WIP status batch update and monitoring via alternative ways by web UI edit / by excel import & export
- WIP lines e-Tracking and smart alerts with color indication
- WIP report generation to fulfill customized demands from internal/ external users

# Vendor Portal

The TradeLink Vendor Portal, a cloud based portal supports all trading documents between all supply chain partners. In addition to a robust packing and shipping process supported by 2D bar coding, RFID, scan & pack and scan & load features. All bar codes and document exchange are GS1 compliant. Key Data flows from these processes to upper management in the form of decision making tools including reports and dashboards allow for efficient logistics decisions.

### Objectives and Benefits:

- Provide cloud-based platform to have improve communication between vendors and logistics providers.
- Provide a platform for direct shipment entry and upload of necessary shipping documents
- Shorten the communication time between vendor and logistics provider
- Minimize the handover of physical documents between vendors and logistics providers and save courier fees
- Improve efficiency and shorten payment times
- Monitor and manage WIP status of orders, predict, and alert possible delays in advance



### Submit Shipment



Vendor selects ASN(s), checks, and provides the mandatory information

-Vendor Invoice Number  
-Port of Loading  
-Final Destination Port  
-Destination Country  
-Actual Ship Mode  
-HAWB# and Feeder Vessel for SEA/ MAWB#, HAWB#, FLT# for AIR

-Freight Term  
-AC Date, ETD, ETA  
-Total Cartons  
-Gross Weight, Net Weight, and Unit of Measurement  
-Item Quantity and Unit Price



Vendor creates Shipment by PO and ASN per Factory Invoice



Vendor uploads Shipping Documents per Shipment

-Packing List  
-Commercial Invoice  
-Proof of Delivery  
-Others

### Shipping Document Storage and File Format



- Years 1 and 2 will be an active storage (Shipment documents can be accessed via the Shipping Summary and Detail pages )
- Years 3 to 7 will be archived in the data warehouse (A new page will be created where the user can retrieve past shipping documents via search parameters )
- Search parameters included (PO number, ASN, AX Shipment ID, Factory Invoice number, Style)

# WIP361

WIP361 is a factory-based production management system that uses RFID technology to collect Real-time production data on the shop floor. With the collected production data, the system offers various online monitoring tools and analytical reports to more effectively and efficiently manage the production process. The system can be applied in many manufacturing sectors including apparel, footwear, and accessories or other industries with similar workflows.

Order Entry	Product	Factory	Color	Quantity	Delivery Date	Status	Start Date	End Date	Start Date	End Date	Start Date	End Date
8000176	WIP361	WIP361	Blue	100	2023-01-15	Done	2023-01-15	2023-01-15	2023-01-15	2023-01-15	2023-01-15	2023-01-15
8000177	WIP361	WIP361	Blue	100	2023-01-15	Done	2023-01-15	2023-01-15	2023-01-15	2023-01-15	2023-01-15	2023-01-15
8000178	WIP361	WIP361	Blue	100	2023-01-15	Done	2023-01-15	2023-01-15	2023-01-15	2023-01-15	2023-01-15	2023-01-15
8000179	WIP361	WIP361	Blue	100	2023-01-15	Done	2023-01-15	2023-01-15	2023-01-15	2023-01-15	2023-01-15	2023-01-15
8000180	WIP361	WIP361	Blue	100	2023-01-15	Done	2023-01-15	2023-01-15	2023-01-15	2023-01-15	2023-01-15	2023-01-15



## WIP361's Features:

- Generates electronic production tickets (RFID media) which replace the barcode ticket or manual card to record the finished production quantities and wages for individual workers for payroll systems
- Tracks the real-time production WIP status and progress in various production processes
- Measures individual worker's productivity to enhance efficiency
- Tracks quality issues and provides quality reports
- Identifies WIP production bottlenecks on time for dynamic resource load balancing
- Offers various management reports for analysis and decision-making purposes
- WIP data can be browsed anytime and anywhere



## Benefits:

- Improves quality, raises productivity and saves costs
- Enhances transparency in the production process
- Increases visibility of individual worker performances
- Provides real-time identification of production bottlenecks
- Reduced WIP Inventory
- Better Customer Service and Company Efficiency

**WIP361**  
By Tradelink Technologies Ltd.